
Phenom™, world's fastest

Desktop Scanning Electron Microscope

takes your imaging performance to a higher level



Phenom™: stunning images, high throughput, ease of use

Phenom-World helps you to stay competitive in a world where critical dimensions are continuously getting smaller with the new generation Phenom™ G2 desktop scanning electron microscope (SEM). The Phenom G2 offers direct access to the high-resolution and high-quality imaging necessary in a large variety of applications. It is an affordable solution that enables engineers, technicians, researchers and educational professionals to visualize micron and submicron structures. The Phenom G2 combines the speed and usability of an optical microscope with better depth of focus, chemical contrast and higher resolution. The Phenom G2 is a complete and integrated system with motorized sample control and a unique combination of light optical and SEM technology.

By using the customer's input and through continuous research, Phenom-World strives to increase the value of the Phenom desktop SEM for its users. Phenom-World introduces regular improvements in both hardware and software to ensure that customers obtain the required information from the Phenom system in the most effective way.

Phenom-World is introducing two new models of the Phenom: **Phenom G2 pure** and **Phenom G2 pro**. Both models provide the same well-known and further improved Phenom ease of use and an imaging speed that is unique.

The **Phenom G2 pure** is the most economical solution for high-resolution imaging. It is a focused system that provides the best imaging results in its class. The high brightness, long lifetime of the CeB6 source and patented sample loading system give the operator easy access to a broad range of possibilities. The Phenom G2 pure can be upgraded to a Phenom G2 pro in our service center.

The **Phenom G2 pro** provides images at an even higher magnification and resolution while maintaining ease of use. Furthermore, the Phenom G2 pro allows its users to work with advanced applications such as Pro Suite and active sample holders. The Phenom G2 pro is a flexible system that can load a large variety of samples and process data to generate detailed results.

Some things have remained unchanged: take, for example, the high level of service Phenom-World provides. Our dedicated team of application and service specialists provides training and support worldwide in order to maximize the results of your Phenom-World products.

When quality is important,
Phenom G2 is the
product of choice.



Markets and applications

The Phenom G2 is used in a large variety of markets and applications.

- quality control of semiconductors
- tribology studies in industry
- inspection of stents for life sciences
- SEM-access in education
- engine wear for avionics and automotive applications
- fast screening tool for high-end research
- investigation of toolmarks and cartridges in forensics
- prescreening of high-end SEM samples
- inspection tool for TEM sample preparation

Materials and Metallurgy

The Phenom G2 allows operators to perform micro-structural analysis and non-destructive testing of metals. This to identify variations that occur after treatment and to determine compositional contrast.

Particles and Pharmaceutical Industry

The Phenom G2 will help you to clearly understand, identify, categorize and classify the morphology of fine particles and tablets.

Integrated Learning

The ease of use and automated working methods of the Phenom G2 system make it a practical teaching tool that allows students to get a clear understanding of the world beyond what the human eye can perceive.

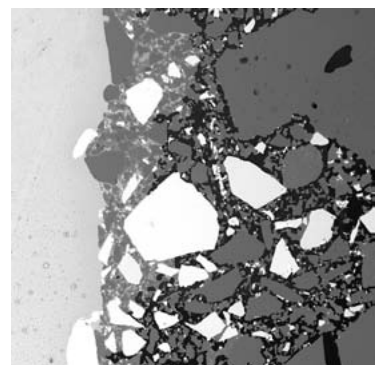
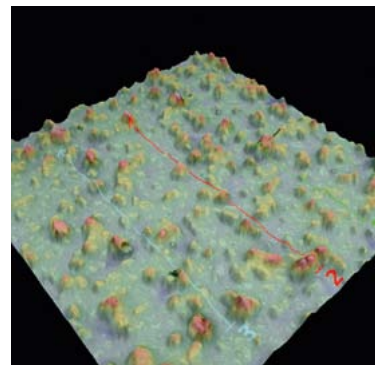
Forensics

The Phenom G2 is used to perform ballistic research, identify scratches and indents from toolmarks, human and animal hair classification or scrutinizing residues such as sand and diatoms.

Process and Quality Control

The Phenom G2 is an ideal tool for processing samples and evaluating quality in a short span of time. The rapid sample preparation and loading time improves the efficiency and effectiveness of failure analysis.

The Phenom G2 SEM-system has become a superior technology as it offers a large depth of focus that helps you to image any 3D shaped sample. The unique system design enables automated processing of image data and application specific solutions



For more application examples and customer testimonials, please visit our website at www.phenom-world.com.

About Phenom-World

Phenom-World is a leading global supplier of desktop scanning electron microscopes and imaging solutions for sub-micron scale applications. Our SEM-based systems are used in a broad range of markets and applications. We continuously invest, develop and integrate our products to help our customers improve their return on investment, time to data and increase system functionality.

With representatives in more than 40 countries and a fast-growing installed base, we are committed to support our customers with our highly specialized team of application and service specialists who provide application and service support on a global scale.



Phenom-World BV is based in the high-tech region of Eindhoven in the Netherlands. This strategic position and collaboration with partners NTS-Group, Sioux embedded systems and FEI Company give Phenom-World access to the newest technologies and best resources.

We help our customers with excellent and fast results from the micro and nano world by supplying worry free imaging and analysis.

Distribution in the UK

Lambda
photometrics

Lambda Photometrics Ltd

Lambda House, Batford Mill,
Harpenden, Hertfordshire AL5 5BZ

E: info@lambdaphoto.co.uk

W: www.lambdaphoto.co.uk

T: +44 (0)1582 764334

F: +44 (0)1582 712084

The leading supplier of scientific and industrial lasers, optical systems and associated accessories, fibre optic components and instrumentation, and machine vision products.



reddot design award



By choosing Phenom-World microscopes, you make a valuable environmental contribution by reducing energy used for imaging and analysis. Phenom-World Products are designed with respect for the environment.



Lambda
photometrics



Lambda Photometrics Ltd Lambda House Batford Mill Harpenden Hertfordshire AL5 5BZ United Kingdom

E: info@lambdaphoto.co.uk **W:** www.lambdaphoto.co.uk **T:** +44 (0)1582 764334 **F:** +44 (0)1582 712084

A Polytec PI Company Registered Office: Lambda House Batford Mill Harpenden Hertfordshire AL5 5BZ Registered in England No: 1332370

PHENOMWORLD