

JSM-6610/JSM-6610LV

Scanning Electron Microscope

JSM-6610A/JSM-6610LA

Analytical Scanning Electron Microscope



JSM-6610LV



JSM-6610LA

These High Performance Scanning Electron Microscopes with improved performance and ease of operation are developed to meet demanding needs from researchers in wide variety of scientific research and industrial fields.

The analytical Scanning Electron Microscopes have JEOL EDS embedded without requiring larger space. The EDS software is embedded in the same PC as the SEM software. Observation and elemental analysis are carried out seamlessly .

Large specimen chamber and motorized stage

The specimen chamber is large enough to handle a 200mm diameter specimen. The specimen stage is mechanically eucentric and is fully motorized for efficient observation.

Operation GUI

The newly developed operation GUI is easy to understand so that you do not have to refer to the instruction manual for basic operations.

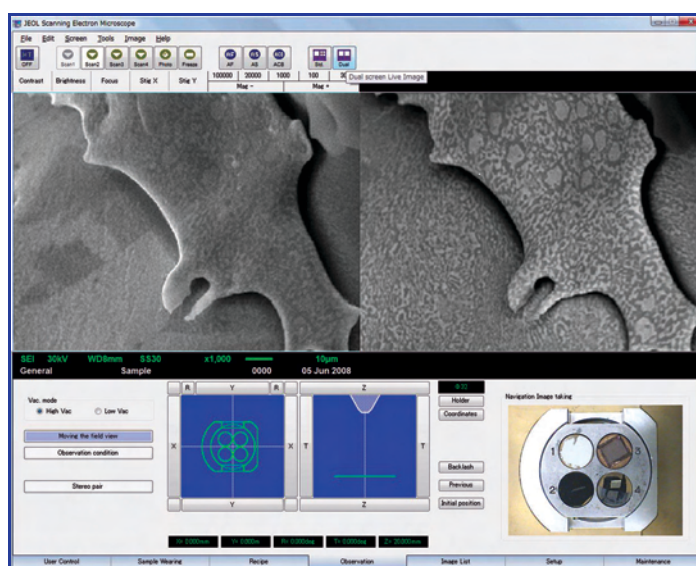
Multi-user compatible

You can customize the GUI to display only icons they use. Thus, operation efficiency is optimized for each user.

Dual live image display

2 kinds of live images, for example a secondary electron image and a backscattered composition image, are displayed at full size side by side.

The new GUI with live display of secondary and backscattered electron live image



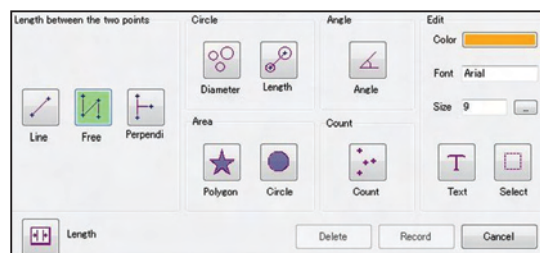
JEOL

Serving Advanced Technology

Measurement of fine structures

A variety of measurement functions quickly measure the size of fine features on the SEM operation monitor.

The optional 3D measurement software constructs a 3D image from a pair of stereo images. The standard eucentric specimen stage with the stereo pair acquisition function makes it easy to acquire stereo images.



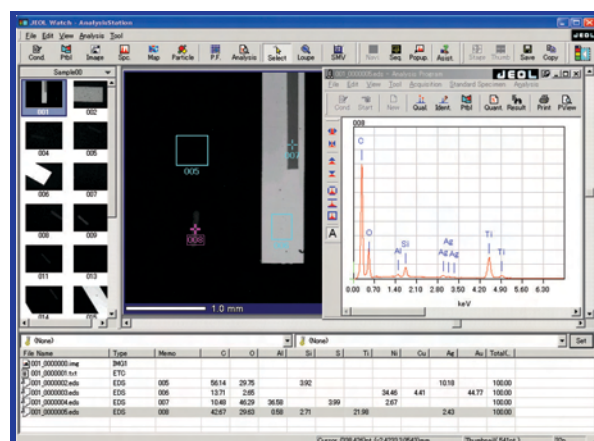
A variety of measurement functions

EDS analysis is seamless

mouse operates both softwares so that you feel as if you had one very wide operation monitor.



SEM Display



EDS Display

Maintenance is easy

The pre-centered filament makes it simple to replace a filament. The centering of a filament in the electron gun is done automatically. Thus the best performance is always reproduced.

Built-in animated movies help you understand these procedures.

The analytical scanning electron microscopes have 2 monitors, one for observation and the other for elemental analysis. One

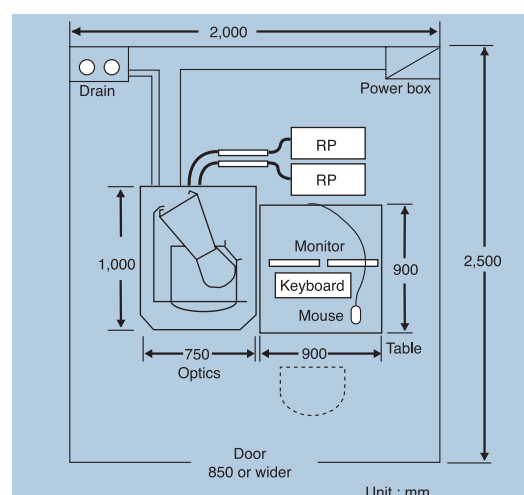
Reliable Diffusion Pump

The advanced diffusion pump produces very clean vacuum suitable for scanning electron microscopes. The maintenance of the diffusion pump is easy and not costly because it does not have moving parts, reducing cost owner ship.

Principal specifications

Resolution	3.0nm (30kV) 8.0nm (3kV) 15nm (1kV)
Magnification	x5 to x300,000
Accelerating voltage	0.3kV to 30kV
Electron gun	Factory pre-centered filament
Condenser lens	Zoom condenser lens
Objective lens	Conical objective lens
Specimen stage	Eucentric specimen stage
X-Y	125mm – 110mm
Z	5mm to 80mm
Rotation	360 degree
Tilt	-10 degree to +90 degree
Vacuum system	
High vacuum model	DPx1, RPx1
Low vacuum model	DPx1, RPx2

Installation room



High technology for quality assurance and the environment.

Certain products in this brochure are controlled under the "Foreign Exchange and Foreign Trade Law" of Japan in compliance with international security export control. JEOL Ltd. must provide the Japanese Government with "End-user's Statement of Assurance" and "End-use Certificate" in order to obtain the export license needed for export from Japan. If the product to be exported is in this category, the end user will be asked to fill in these certificate forms.

JEOL JEOL Ltd. 1-2 Musashino 3-chome Akishima Tokyo 196-8558 Japan Sales Division ☎(042)528-3381 ㊟(042)528-3386

•Australia/ JEOL (AUSTRALASIA) Pty. Ltd., Unit 9, 750-752 Pittwater Road Brookvale, N.S.W. 2100 Australia •Belgium/ JEOL (EUROPE) B.V., Planet II, Building B Leuvensesteenweg 542, B-1930 Zaventem Belgium •Canada/ JEOL CANADA, INC. (Represented by Soquelec, Ltd.), 5757 Cavendish Boulevard, Suite 540, Montreal, Quebec H4W 2W8, Canada •China/ JEOL LTD., BEIJING OFFICE, Room B1110/11, Wantong New World Plaza No. 2 Fuchengmenwai Street, Xicheng District, Beijing 100037, P.R.China •Egypt/ JEOL SERVICE BUREAU, 3rd Fl. Nile Center Bldg., Nawal Street, Dokki, (Cairo), Egypt •Germany/ JEOL (GERMANY) GmbH, Oskar-Von-Miller-Strasse 1A, 85386 Eching, Germany •Great Britain & Ireland/ JEOL (U.K.) LTD., JEOL House, Silver Court, Watchmead, Welwyn Garden City, Herts AL7 1LT, U.K. •Italy/ JEOL (ITALIA) S.p.A., Centro Direzionale Green Office Via dei Tulipani, 1 20090 Pieve Emanuele (MI) Italy •Korea/ JEOL KOREA LTD., Dongwoo Bldg. 7F, 458-5, Gil-Dong, Gangdong-Gu, Seoul, 134-010, Korea •Malaysia/ JEOL (MALAYSIA) SDN.BHD.(359011-M), 205, Block A, Mezzanine Floor, Kelana Business Center, 97, Jalan SS 7/2, Kelana Jaya, 47301 Petaling Jaya, Selangor, Malaysia •Mexico/ JEOL DE MEXICO S.A. DE C.V., Av. Amsterdam #46 DEPS. 402 Col Hipodromo, 06100, Mexico D.F. Mexico •Scandinavia/ JEOL (SKANDINAVISKA) A.B., Hammarbacken 6A, Box 716, 191 27 Sollentuna Sweden •Singapore/ JEOL ASIA PTE. LTD., 29 International Business Park #04-02A Acer Building, Tower B Singapore 609923 •Taiwan/ JIE DONG CO., LTD., 7F, 112, Chung Hsiao East Road, Section 1, Taipei, Taiwan 10023 Republic of China •The Netherlands/ JEOL (EUROPE) B.V., Lireweg 4, NL-2153 PH Nieuw-Vennep, The Netherlands •USA/ JEOL USA, INC., 11 Dearborn Road, Peabody, MA 01960, U.S.A.

•Please confirm other territories by the web site.

No. 1301G848C Printed in Japan, Kp